



Offham Slope, Woodside Park, N12 7BZ

Guide Price £1,195,000 Freehold

Council Tax Band F

**REAL ESTATES**  
Est. 1981

Estate Agents · Residential Sales · Investments · Lettings

**\* CHAIN FREE SALE \*** Real Estates are delighted to bring to the market this **FOUR BEDROOM TWO BATHROOM SEMI-DETACHED** family home set on a quiet, highly desirable cul-de-sac in Woodside Park.

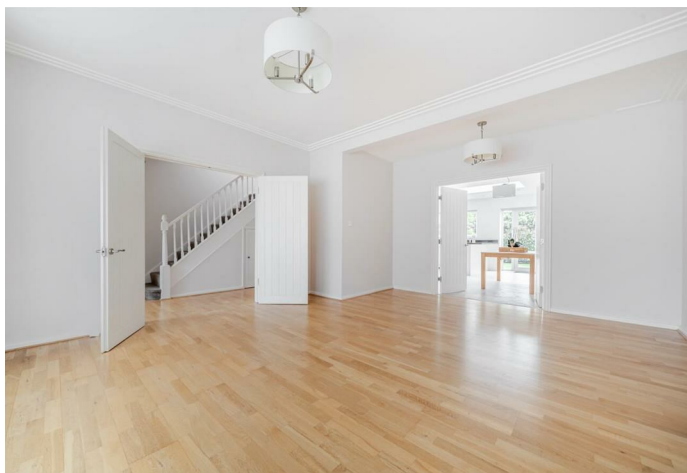
The property has been extended to the ground floor rear and into the loft, plus benefits from **OFF STREET PARKING** for at least two cars and a **SEPARATE GARAGE**.

The downstairs accommodation comprises a vast living area to the front, leading into an open plan kitchen diner with double doors onto the **EAST FACING** garden. There is a guest WC, utility room and storage cupboards on this level too.

The first floor provides three bedrooms, two doubles and one single, as well as the main bathroom, whilst the loft houses a principal bedroom with en-suite.

Offham Slope is within the catchment area for Frith Manor Primary School and just a short walk from the popular coffee shops on Sussex Ring and Woodside Park Station on the Northern Line.

**SOLE AGENT**





## Offham Slope, London, N12

Approximate Area = 1667 sq ft / 154.8 sq m  
 Limited Use Area(s) = 32 sq ft / 2.9 sq m  
 Outbuilding = 122 sq ft / 11.3 sq m  
 Total = 1821 sq ft / 169 sq m

For identification only - Not to scale

Denotes restricted head height



Floor plan produced in accordance with RICS Property Measurement 2nd Edition, incorporating International Property Measurement Standards (IPMS2 Residential). © richcom 2026. Produced for Real Estates. REF: 1439133

Energy Efficiency Rating		Current	Potential
Very energy efficient - lower running costs	A		80
Energy efficient - lower running costs	B		
Decent energy efficiency - lower running costs	C	66	
Some energy efficiency - lower running costs	D		
Low energy efficiency - higher running costs	E		
Very low energy efficiency - higher running costs	F		
Least energy efficient - higher running costs	G		

EU Directive

